

WASP3D Xpress

Live Stream Graphic Overlay Solution

Installer Guide

Premium graphics for an Upgraded Visual Experience.

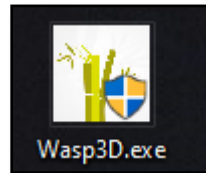
Premium Design Feature for Live Streamers, web channel, TV or web platforms.

REALTIME 3D
BROADCAST GRAPHICS
www.wasp3d.com

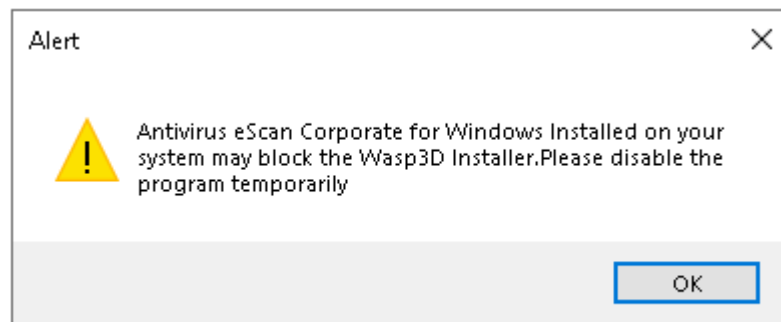
VISUAL APPEAL SPEED TOOLS VERSATILITY WORKFLOW

WASP3D.exe Installer

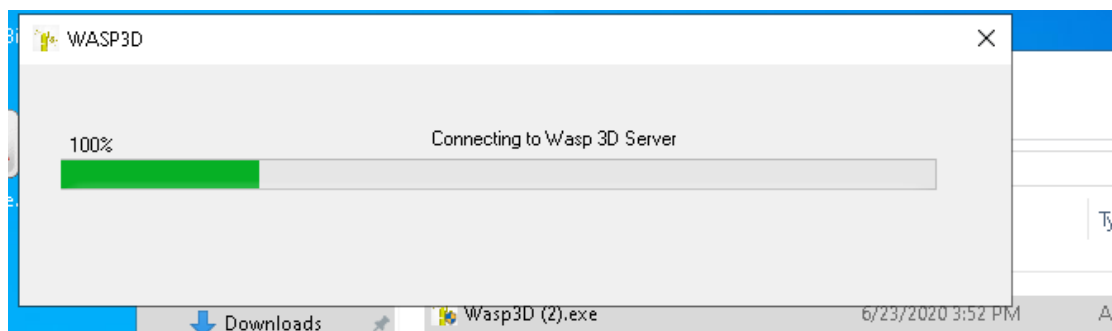
1. Download **WASP3d installer .exe** through WASP3D XPRESS page.
2. Launch .exe by double clicking on it.



3. An antivirus protection message will popup & user needs to Click **OK** button, (if any antivirus is installed on machine otherwise this step will be skipped)



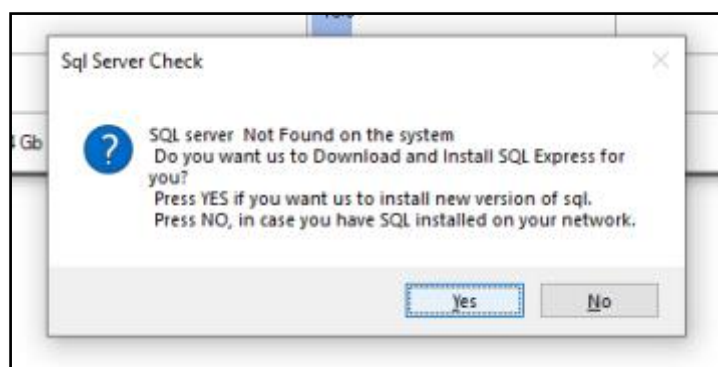
4. .Exe downloads all installation files at local system temp folder from cloud and process bar shows the download status.



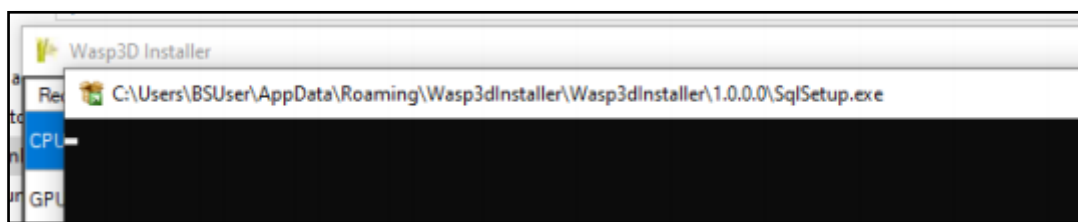
5. After 100% completion of download, it will launch WASP3D Installer.
6. WASP3D installer will match the system configuration, compatibility with required configuration to run WASP3D software files.
7. If system configuration is lower than the required configuration then the setup will quit after popping up the same message.
8. Installer will ask for SQL related questions, to find about SQL at local machine to process setup further, according to user input.

Following are the message pop-up for user input according to SQL finding by Installer:

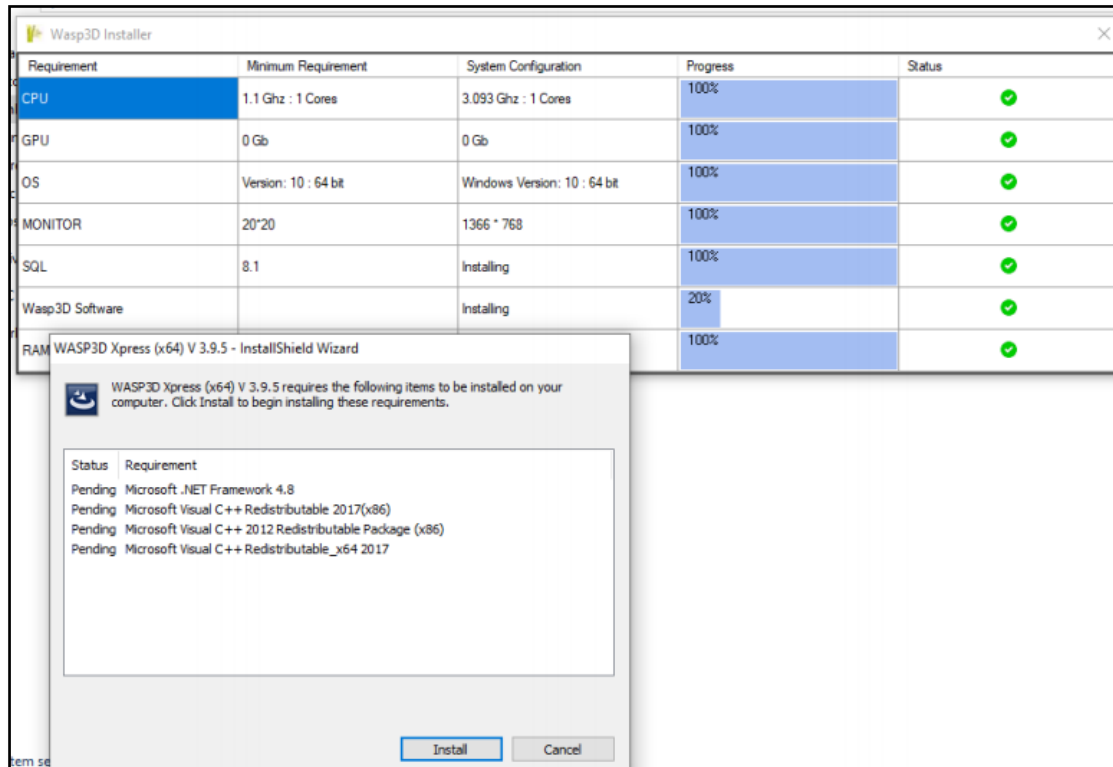
- 8.1. If there is no SQL server installed at local machine than installer will ask user to select whether he wants to install SQL though installer or not.



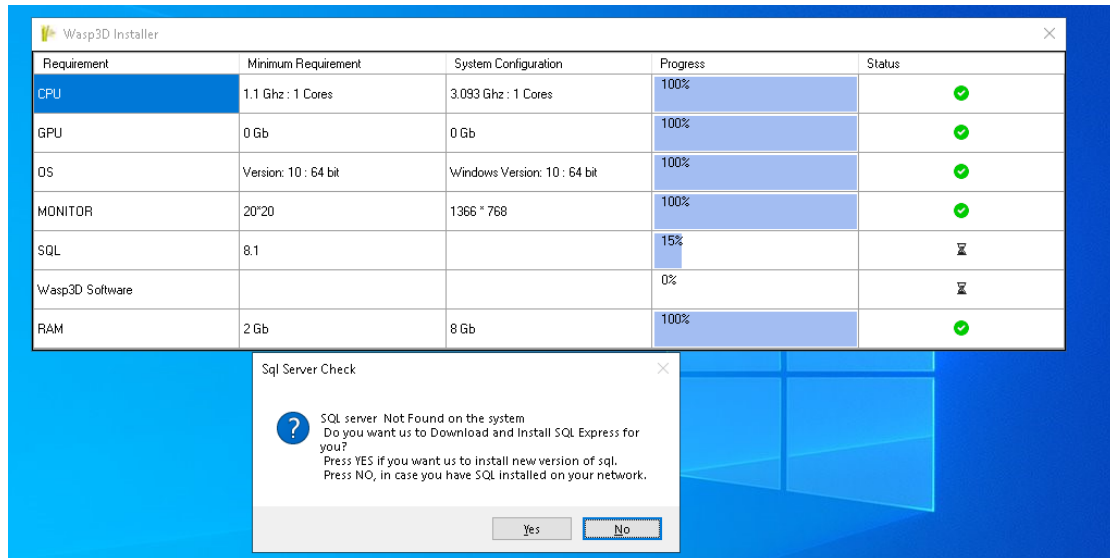
- 8.1.1. If user select **YES** than installer will download & install SQL at local machine.



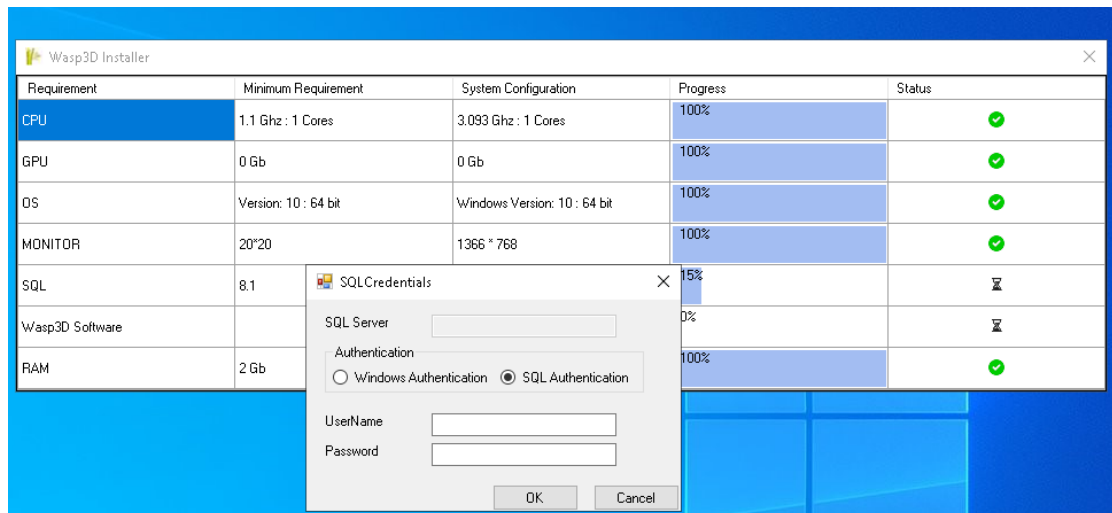
After 100% completion of SQL download & installation, installer will launch WASP3D software setups.

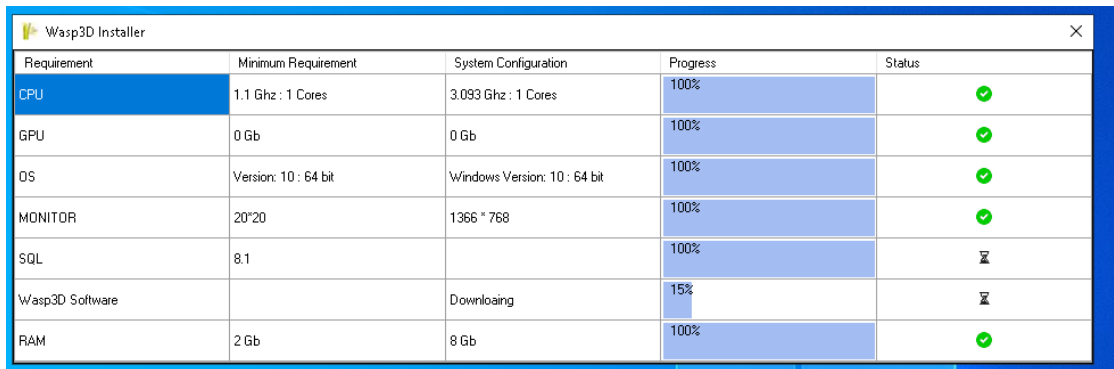
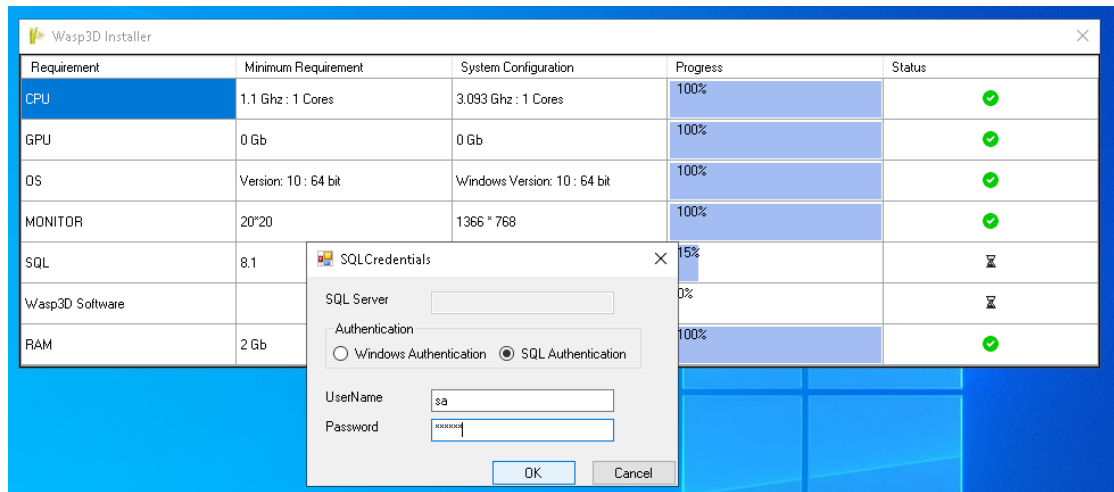


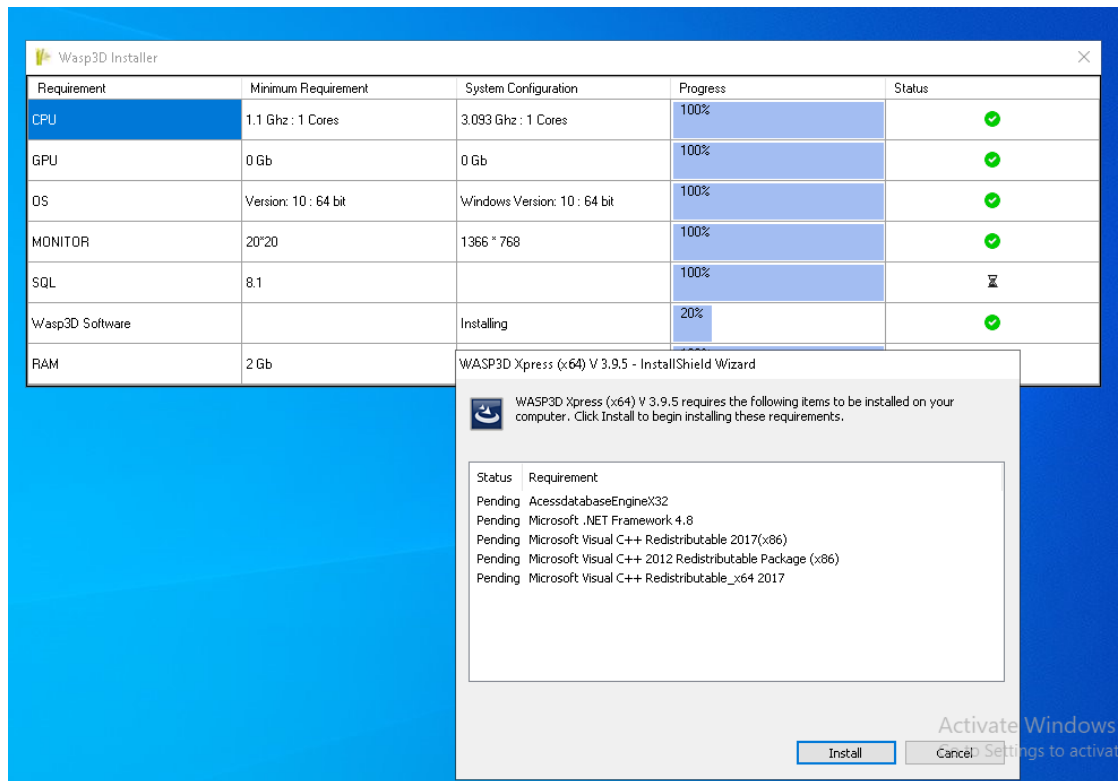
8.1.2. If user selects **NO** as option then installer asks him to enter SQL server authentication, whether he want to use from network.



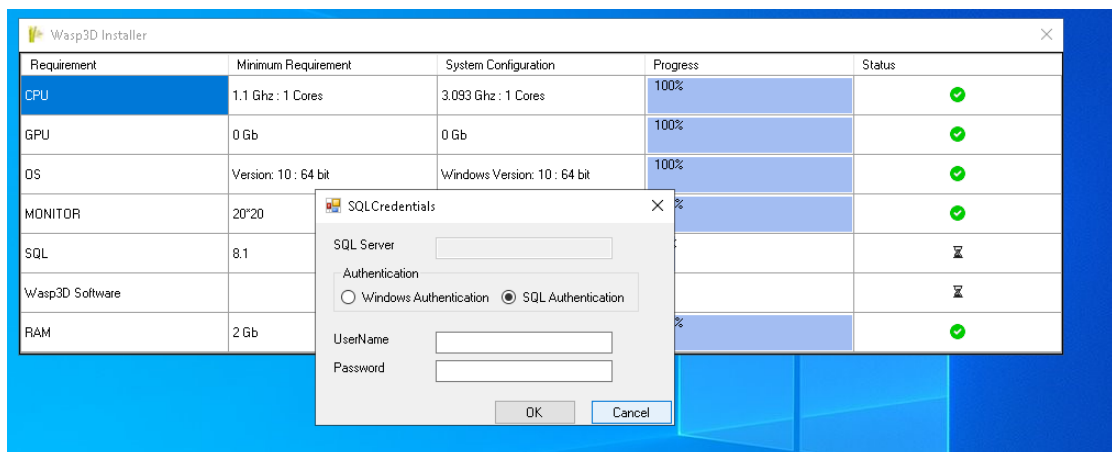
8.1.2.1. After entering SQL credential installer download & install WASP3D setup at local machine.

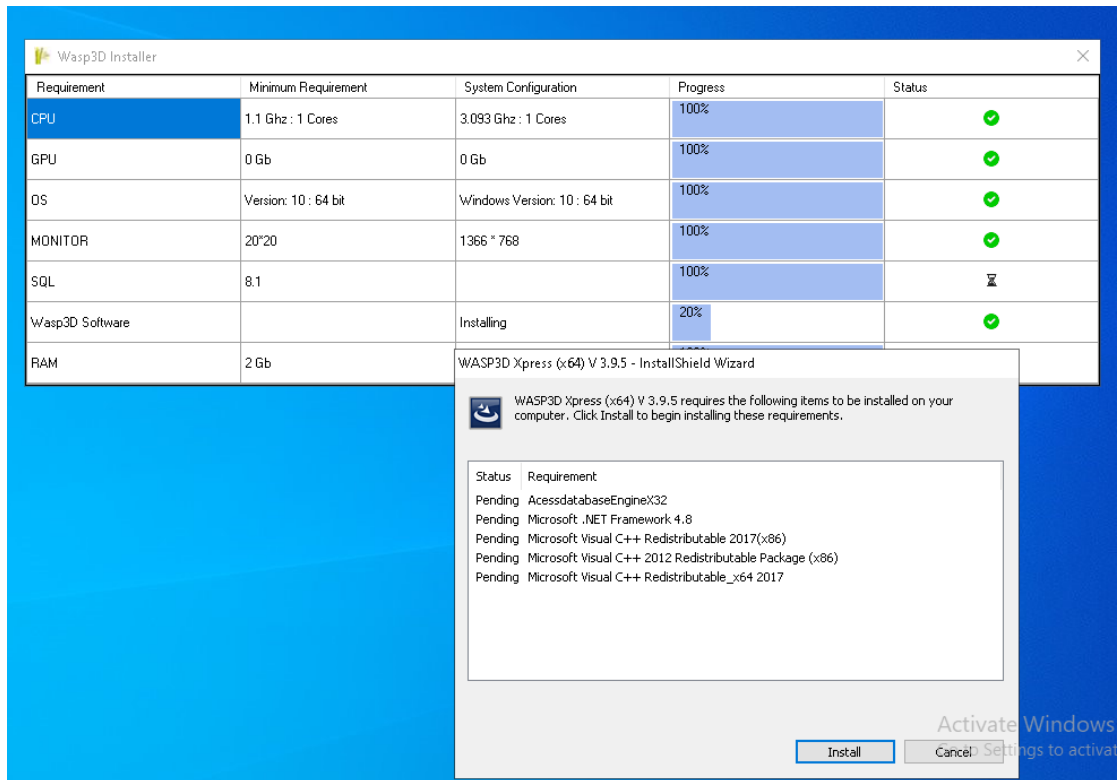






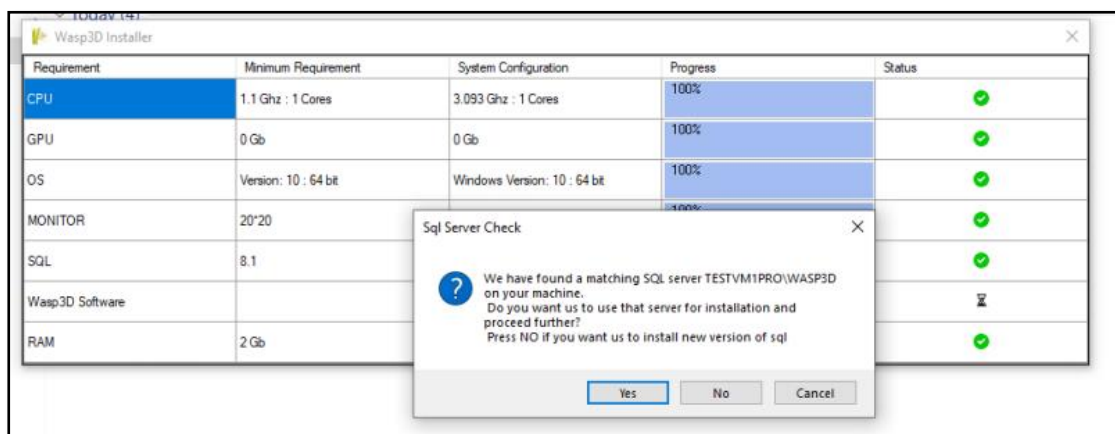
8.1.2.2. If user **cancels** SQL authentication than installer continues WASP3D software installation without SQL information.



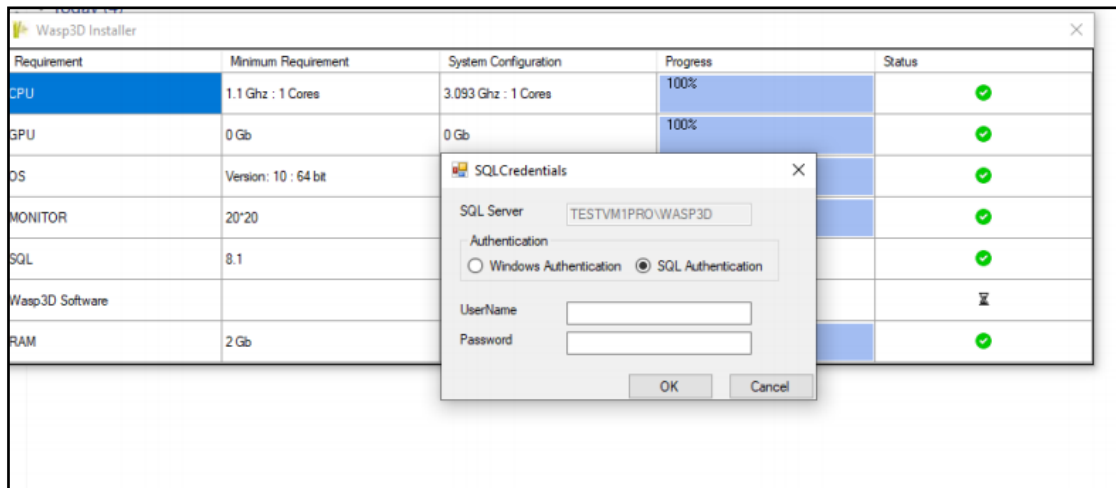


8.2. If SQL already installed at machine than installer asks user to choose whether he want to use installed SQL at local machine or wants to install a new version of SQL or just skip this step by choosing a cancel option.

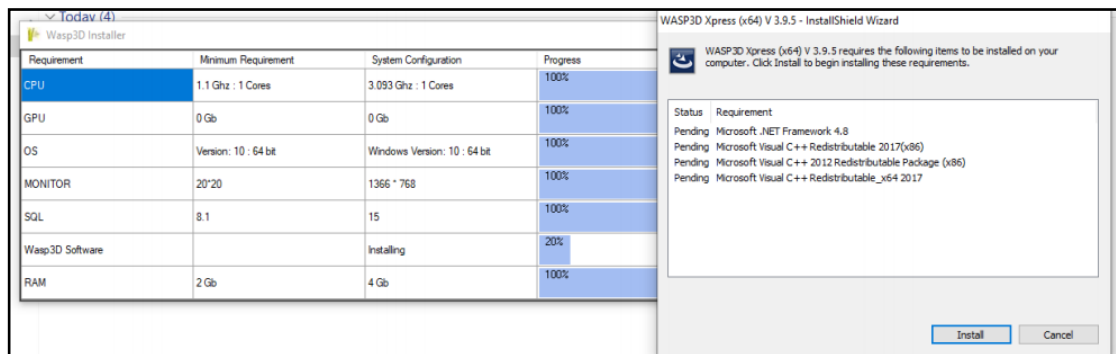
8.2.1. If user select **YES**, and wants to use local installed SQL.



8.2.1.1. Installer asks the user to enter installed SQL authentication.

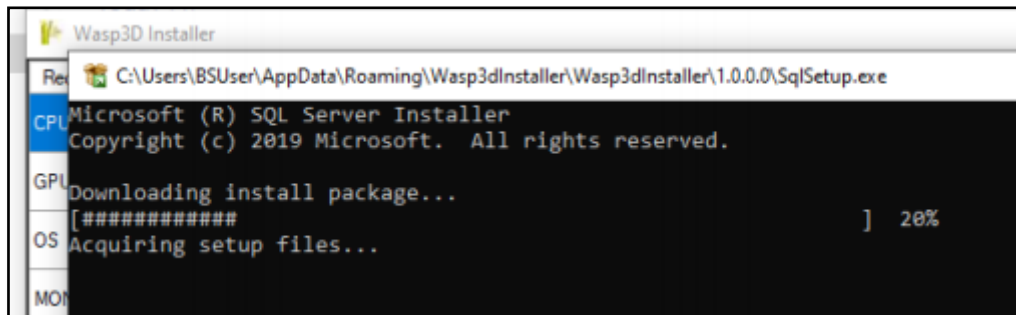


- After enter these authentication Installer will download & install WASP3D setup.

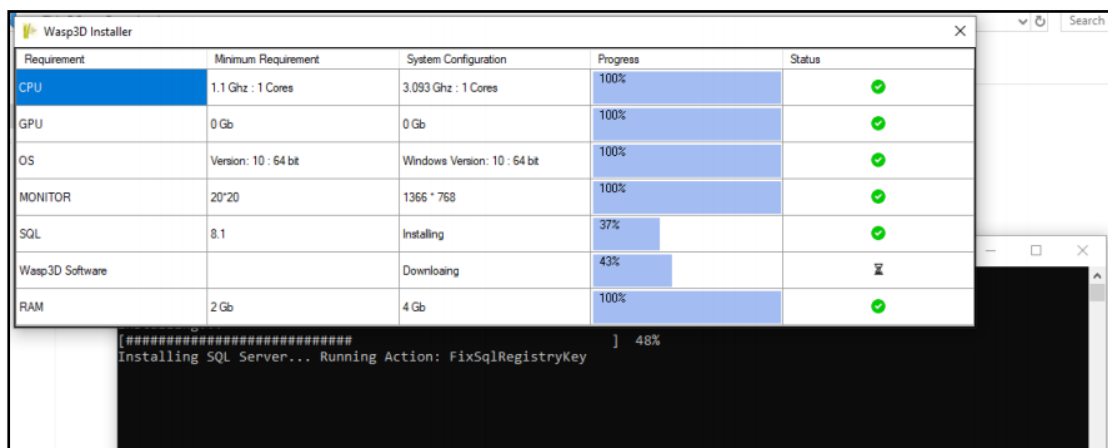


8.2.1.2. If user chooses **CANCEL** option then installer skip the SQL authentication steps & proceeds to download installed WASP3D setups.

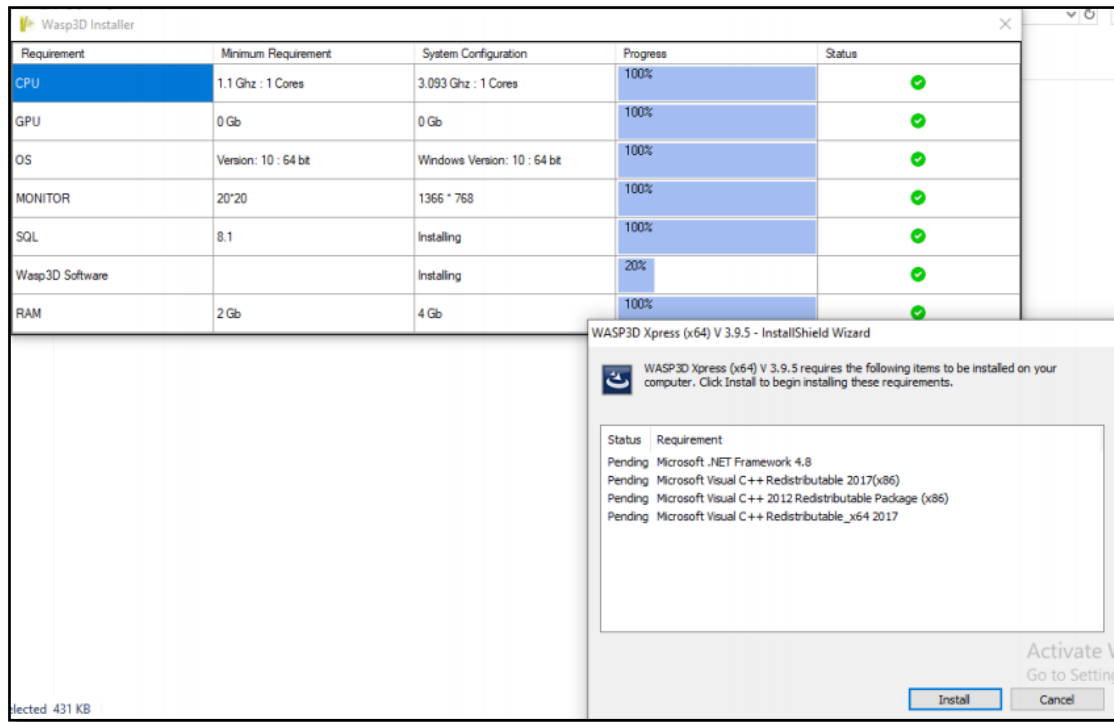
8.2.2. If user chooses **NO** as an option then installer downloads & install SQL server new instance at local machine.



- WASP3D setups download are done during SQL installation processes.



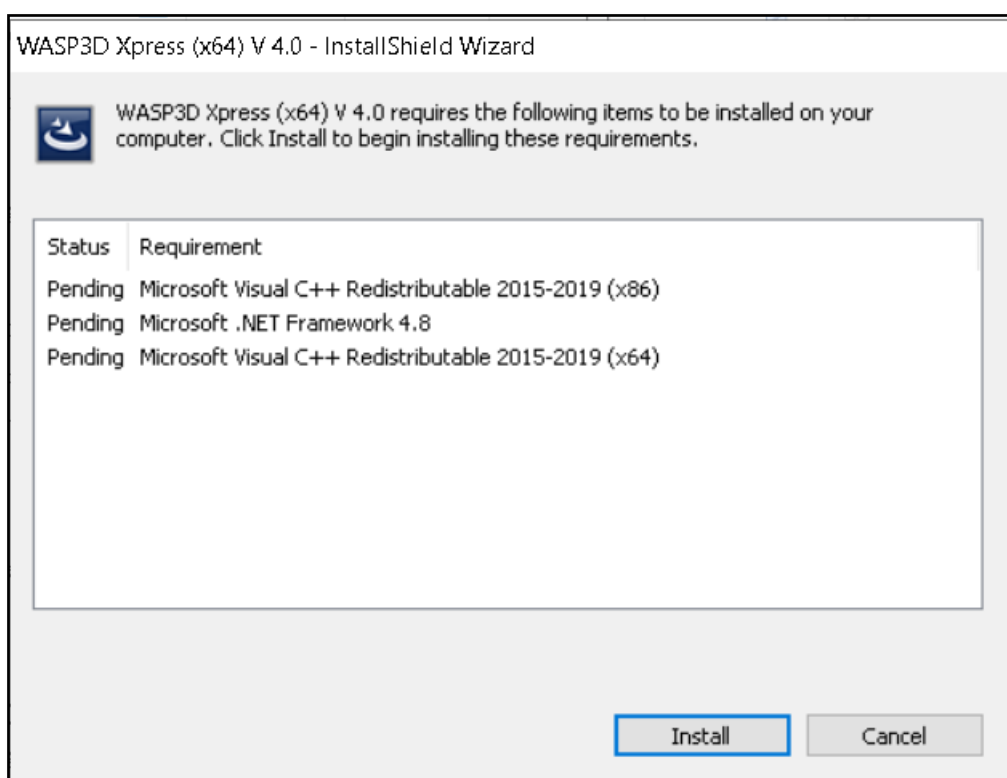
- After installing SQL server, WASP3D setups are installed at local machine.



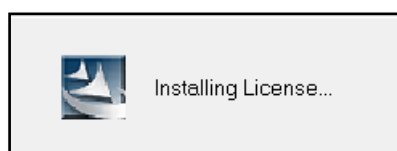
8.2.2. At the choice of **CANCEL** SQL installation step, skip & WASP3D installation will start.

9. Installation will ask user to install prerequisites, Click To install and proceed further:

- Microsoft visual C++ Redistributable2015-2019(x86)
- Microsoft .Net Framework 4.8x64
- Microsoft Visual C++ Redistributable 2015-2019(x64)

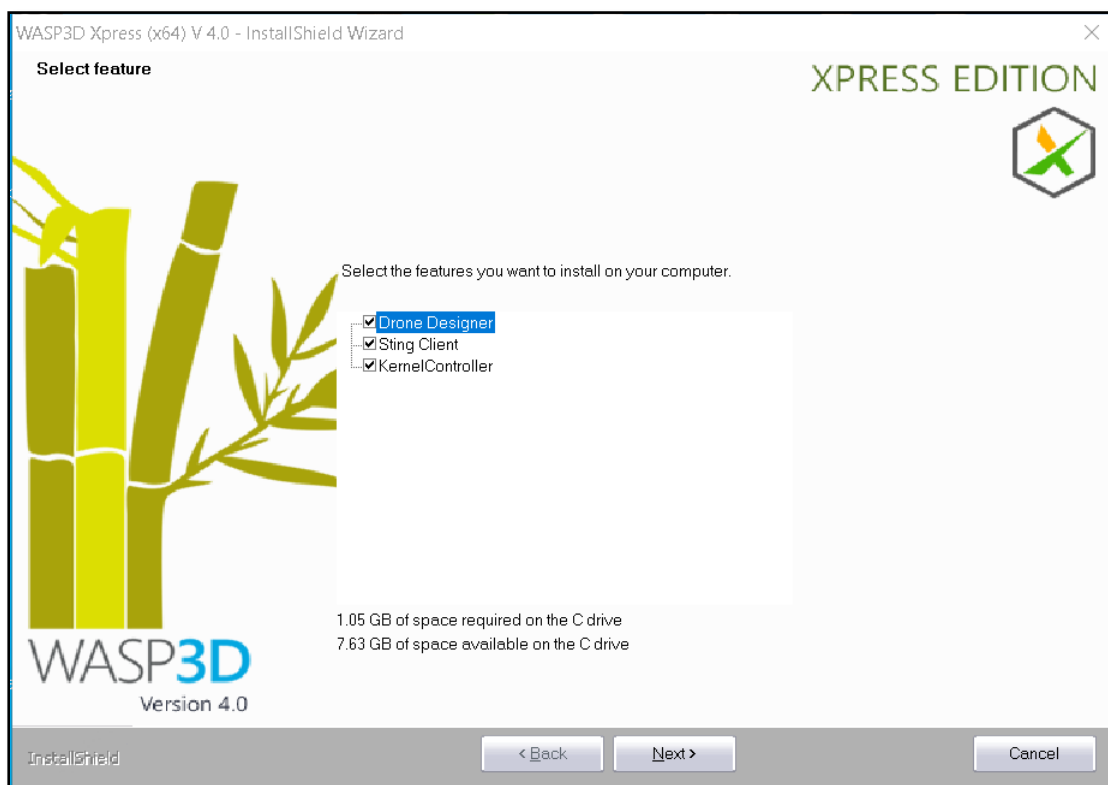


10. After clicking on the install button, it will start installing soft license.



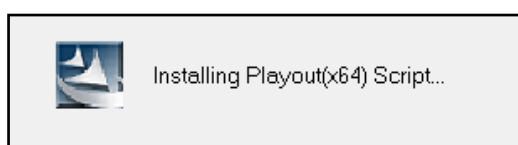
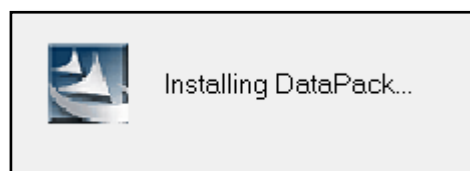
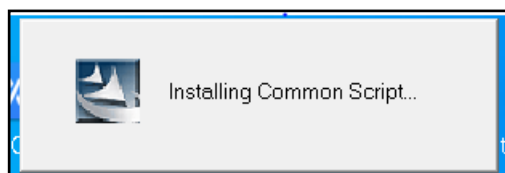
11. Now Xpress setup asks the user for the components which needs to be installed which includes :

- Drone Designer Xpress
- Sting Client Xpress
- Kernel Controller



Note: You can select any module you need to install.

12. Prerequisites related component are as follows:



12.1. Drone designer requires:

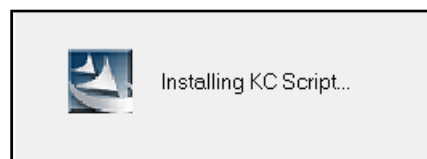
- Playoutx64
- Common component

12.2. Sting client requires (Process will be done in Background):

- Playoutx64
- Common Component

12.3. Kernel Controller requires:

- SQL server
- Common Component
- Configuration has to be done in the data base updater to select SQL server and Data base.



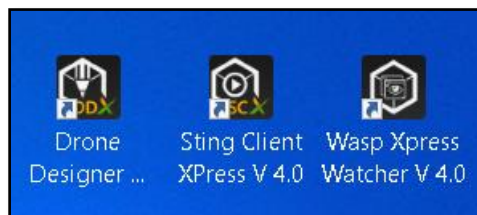
13. Now InstallShield Wizard will prompt user to restart your computer now or later.



14. Click on finish button with your choice selected to perform complete setup.

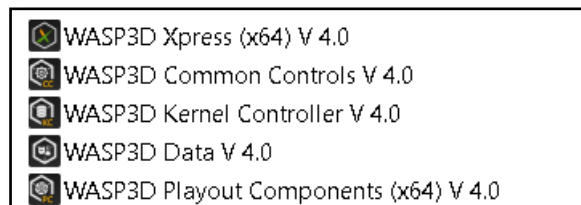
15. Shortcut will be created for the following components on desktop:

- Drone designer Xpress
- Sting client Xpress
- Wasp Xpress watcher



Note: When we need to invoke sting client and sting server combined we will use Xpress watcher.

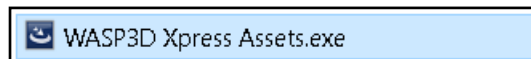
16. List of component installed while installing WASP3D Xpress setup:



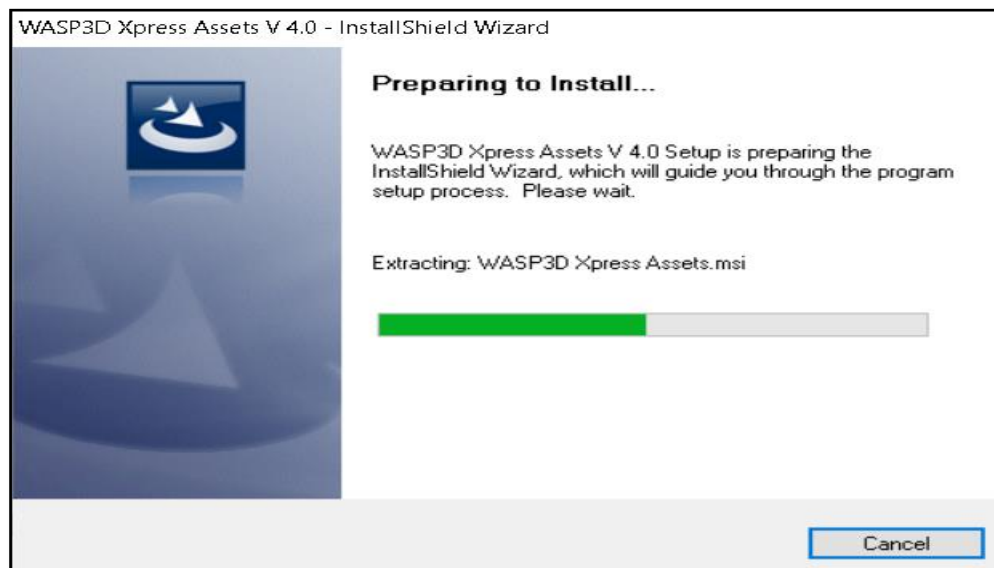
WASP3D Xpress Assets Installation:

1- Double click on the WASP3D XPRESS (x64).exe.

Note: Prerequisite - X-Drive should be connected.



2- Install Shield Wizard pop up for the extraction.



3- Now a feature selection window will pop up, you can select\deselect multiple features by checking\Un-checking the check boxes.

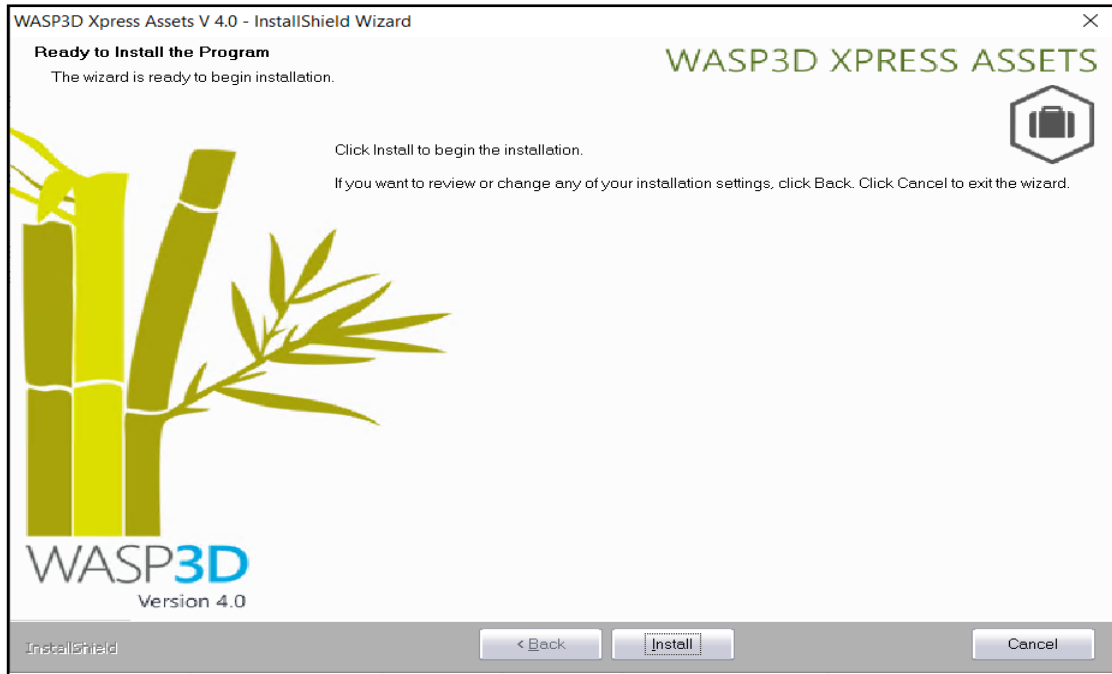
Features are as follows:

- Assets
- Material Library
- Templates
- Playlist
- Favourite

Click on **Next** to install all above mention features



4- Click on **Install** Button to install above features



5- Progress bar will show the progress of installation of the features.



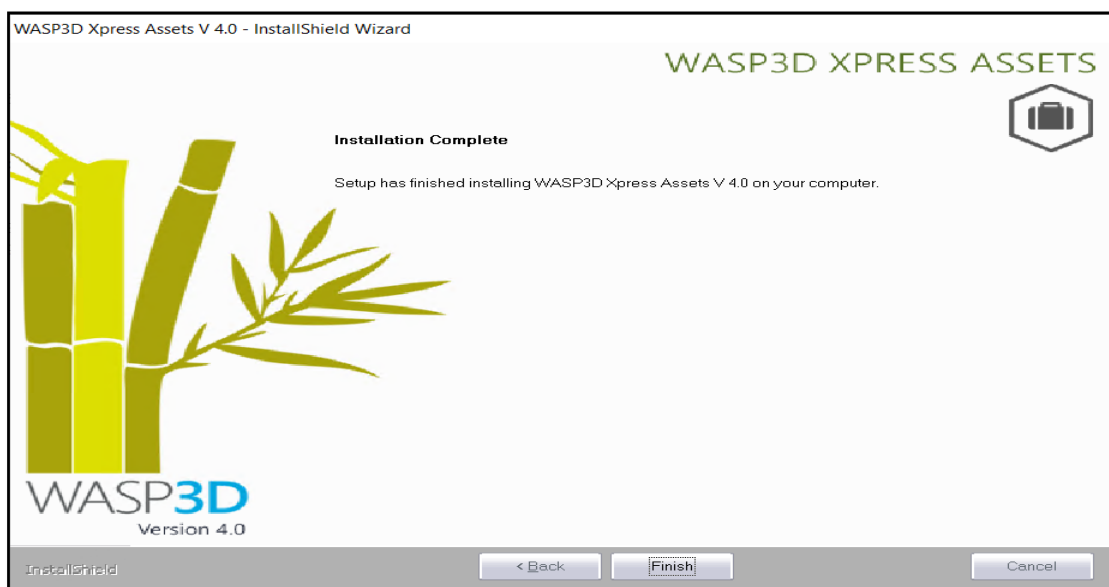
6- Looks updater window will pop up.

- Configuration need to be done need to select same data base on same SQL server as of KC.

The screenshot shows a 'Looks Updater' window with the following components:

- SQL Server Login Details:**
 - A list box containing the following entries:
 - ADMIN\VEEAMSQL2016 (13.0)
 - BUILD12\EMSDATABASE (9.0)
 - BUILD12\SQLEXPRESS (9.0)
 - CLIENT4\SQLEXPRESS (14.0)
 - CLOUDSERVER\SQLEXPRESS (14.0)
 - CONFERENCE\SQL2017 (14.0)
 - CONFERENCE\SQLEXPRESS (12.0)
 - User name:** A text box containing 'sa'.
 - Password:** An empty text box.
 - Connect:** A button.
- Database Details:**
 - A large empty rectangular area for displaying database information.
- Buttons:** 'OK' and 'Close' buttons at the bottom right.
- Status:** A 'Done' label at the bottom left.

7- Click on finish button with your choice selected to perform complete setup.



8- List of component installed while installing Xpress setup:

